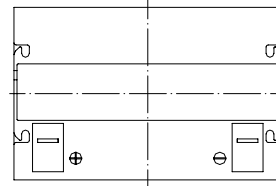
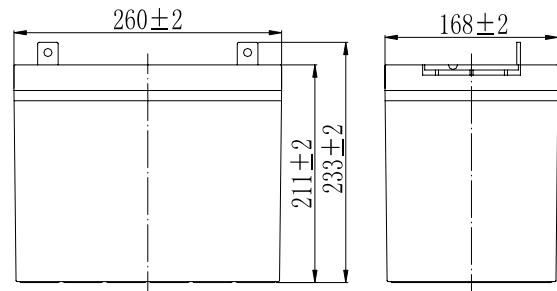


Specifications

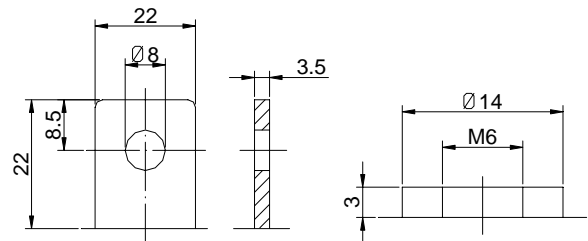
| | | |
|---|---|--|
| Nominal Voltage | | 12 V |
| Capacity (25°C) | 10HR(10.8V) | 70 Ah |
| | 5HR(10.5V) | 61.5Ah |
| | 1HR(9.60V) | 43.4Ah |
| Dimension | Length | 260mm ± 2 (10.24inch) |
| | Width | 168mm ± 2 (6.61inch) |
| | Height | 211mm ± 2 (8.31inch) |
| | Total Height | T5: 233 ± 2mm (9.17inch) T9: 214 ± 2mm (8.43inch) |
| Approx. Weight | | 21.5kg (47.3lbs) ± 4% |
| Terminal type | | T5/T9 |
| Internal resistance (Fully charged, 25°C) | | Approx. 6.5mΩ |
| Capacity affected by temperature (10HR) | 40°C | 102% |
| | 25°C | 100% |
| | 0°C | 85% |
| | -15°C | 65% |
| Self-discharge (25°C) | 3 month | Remaining Capacity: 91% |
| | 6 month | Remaining Capacity: 82% |
| | 12 month | Remaining Capacity: 65% |
| Nominal operating temperature | | 25°C ± 3°C (77°F ± 5°F) |
| Operating temperature range | Discharge | -15°C ~ 50°C (5°F ~ 122°F) |
| | Charge | -10°C ~ 50°C (14°F ~ 122°F) |
| | Storage | -20°C ~ 50°C (-4°F ~ 122°F) |
| Float charging voltage(25°C) | 13.50 to 13.80V Temperature compensation: -18mV/°C | |
| Cyclic charging voltage(25°C) | 14.50 to 14.90V Temperature compensation: -30mV/°C | |
| Maximum charging current | 21A | |
| Terminal material | Copper | |
| Maximum discharge current | 700A(5 sec.) | |
| Designed floating life(20°C) | 12 years | |



Dimensions



Terminal



Terminal T5

Terminal T9

- ◆ Absorbent glass mat technology;
- ◆ Recognized by UL & CE;
- ◆ ABS container.

Constant Current Discharge Characteristics (A, 25°C)

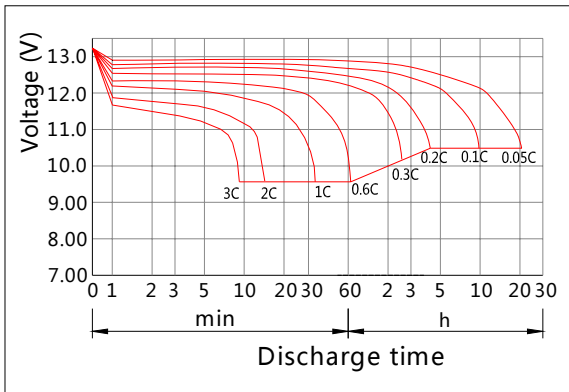
| F.V/TIME | 10min | 15min | 30min | 60min | 2h | 3h | 4h | 5h | 8h | 10h | 20h |
|----------|-------|-------|-------|-------|------|------|------|------|------|------|------|
| 9.60V | 147 | 116 | 70.0 | 43.4 | 25.6 | 17.9 | 14.6 | 12.5 | 8.57 | 7.13 | 3.74 |
| 9.90V | 143 | 113 | 68.6 | 42.7 | 25.4 | 17.7 | 14.6 | 12.4 | 8.52 | 7.11 | 3.73 |
| 10.2V | 137 | 109 | 66.5 | 41.7 | 25.2 | 17.6 | 14.5 | 12.3 | 8.46 | 7.09 | 3.72 |
| 10.5V | 131 | 105 | 64.9 | 40.8 | 24.8 | 17.5 | 14.4 | 12.3 | 8.40 | 7.05 | 3.70 |
| 10.8V | 123 | 99.3 | 62.5 | 39.6 | 24.2 | 17.0 | 13.9 | 11.9 | 8.15 | 7.00 | 3.68 |

Constant Power Discharge Characteristics (Watt, 25°C)

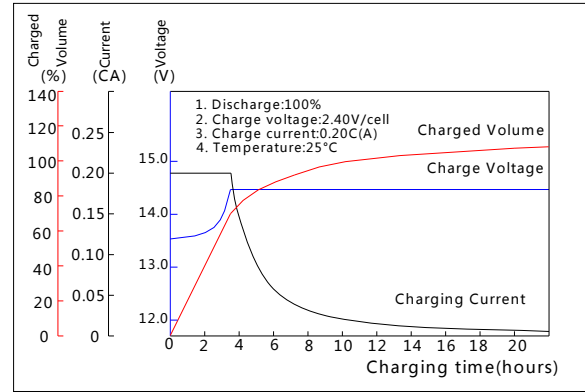
| F.V/TIME | 10min | 15min | 30min | 60min | 2h | 3h | 4h | 5h | 8h | 10h | 20h |
|----------|-------|-------|-------|-------|-----|-----|-----|-----|------|------|------|
| 9.60V | 1588 | 1268 | 785 | 495 | 296 | 210 | 172 | 148 | 102 | 85.1 | 44.9 |
| 9.90V | 1540 | 1238 | 770 | 487 | 294 | 209 | 171 | 147 | 101 | 84.9 | 44.8 |
| 10.2V | 1476 | 1192 | 746 | 475 | 292 | 207 | 170 | 146 | 100 | 84.7 | 44.7 |
| 10.5V | 1413 | 1152 | 728 | 466 | 287 | 206 | 169 | 145 | 99.8 | 84.2 | 44.4 |
| 10.8V | 1334 | 1091 | 701 | 451 | 280 | 200 | 164 | 140 | 96.8 | 83.6 | 44.1 |

Note: The above characteristics data can be obtained within three charge/discharge cycles.

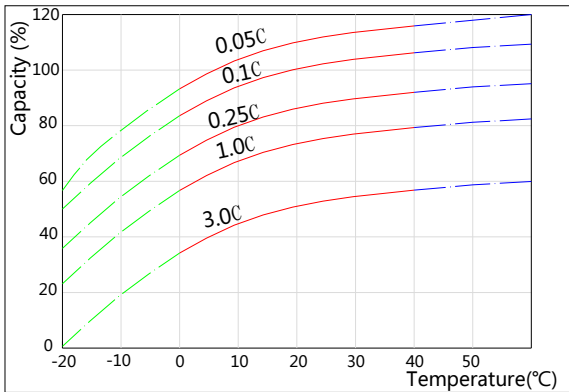
Discharge Characteristics(25°C)



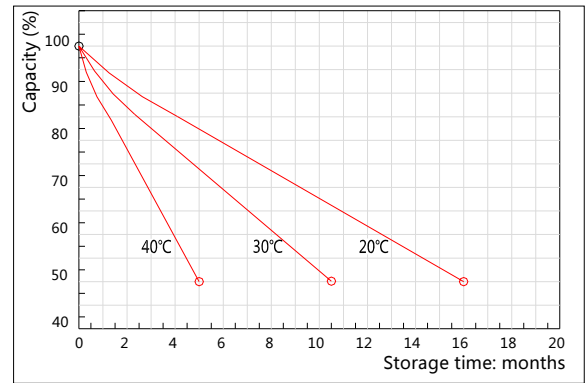
Charging Characteristics(25°C)



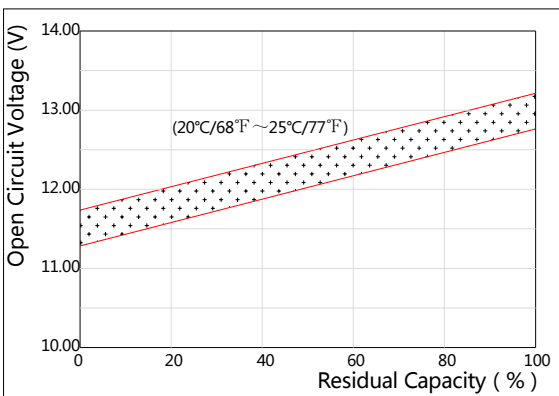
Effect of Temperature on Capacity



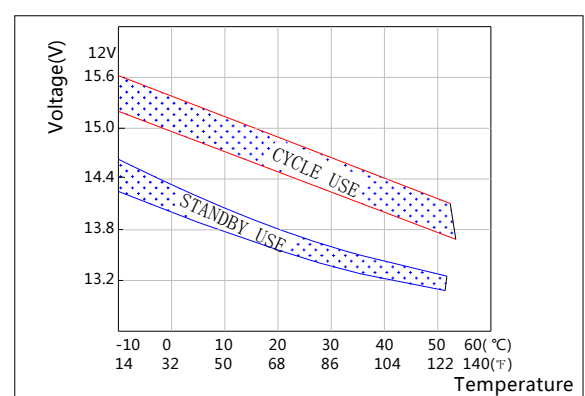
Self-discharge Characteristics



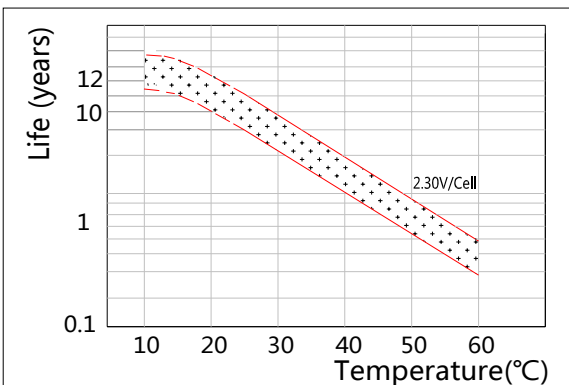
The Relationship for Open Circuit Voltage and Residual Capacity (25°C)



The Relationship for Charging Voltage and Temperature



Floating Life on Temperature



Cycle Life on D.O.D(25°C)

